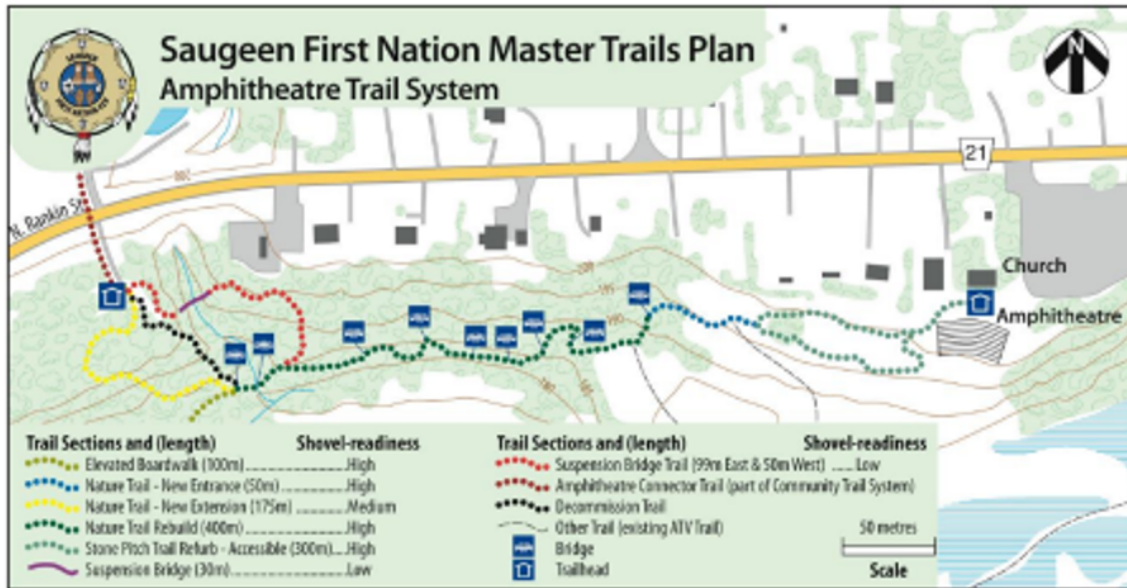


SAUGEEN FIRST NATION #29

COMMUNITY TRAIL DEVELOPMENT PLAN

FINAL DRAFT REPORT



Phase 1
AMPHITHEATRE
NATURE TRAIL

Phase 2
COMMUNITY HEALTH
& WELLNESS TRAILS

Future Phases
SAUBLE PARK TRAILS
&
COUNTY RD 13 CORRIDOR

PROPOSED COMMUNITY TRAIL DEVELOPMENT

Trail Development has been identified by the Economic Development Office as a method to boost tourism product on the Reserve as well as increase opportunities for residents to engage in active transportation and recreation. Trails would enhance current assets such as the Amphitheatre and provide interpretation to historic trails such as footpath from the top hilltop to the traditional river hunting grounds. We have been working on reconciliation through trails development, focusing heavily on interpretation of history, tradition, language, and species at risk with all the projects we've been involved with.

The overall goal of this development is to establish a trail network for the community, another tourism trail network for economic development and an active transportation route along Country Road 13. Over 18 different trails have been identified and will require various levels of stakeholder engagement, planning and design. This report has been separated into 3 sections: the Amphitheatre development (tourism focused), the Community Health and Wellness Trail development, and recommended scope of work for County Road 13 Corridor Assessment including the trail linkages for the Economic Hub at Charles Street and the connection of Cameron Drive to Country Road 13. The targeted user for the first three projects is walking and hiking while the County Road 13 route will also include cycling. For the Community and Amphitheatre networks we propose a stacked loop trail system from easy to difficult with 3 of the trails complying with accessibility standards. As a result, each trail has been given a shovel readiness and priority scale.

PROJECT BACKGROUND

In 2020, the Economic Development Department submitted an application to Bruce Power's Indigenous Community Investment Fund for the development of a Community Master Trails Plan. Largely due to the COVID-19 global pandemic, this project has been a work in progress for some time. A full costing for development of the Community trail system will be included, development of a hands-on training program for a crew of local people and a full signage program will also be determined and costed including interpretive signage in two languages (Ojibway & English).

PROJECT CONSULTANTS

Wikwemikong Development Commission through Wikwemikong Tourism Trail Development Services has been planning and building trails throughout Ontario since 2013. We have assisted many First Nation's and Municipalities in developing Trail Plans that are aligned with their communities health, economic and social development plans as well as building capacity through our trails training initiatives. Our reputation as a leader in developing indigenous tourism product has been recognized for best practices in developing sustainable adventure travel products and services.

Our partner at Quercwood Consulting and TREADscape has extensive experience in comprehensive trail planning and trail development, land management, and community consultation. As with any trail organization we work with, a realistic plan with achievable elements and supportive funding will be identified.

AMPHITHEATRE NATURE TRAIL SYSTEM

The amphitheatre location, although still under construction, is stunning. The potential to create a tourism and educational trail experience to complement this location is unlimited. The current development proposal consists of 7 different sections of varying difficulty to create a stacked loop system. This development proposal tries to consider budget but is not determined by it. Instead, it is written as a best-case scenario with a focus on utilizing the drystone experience and craftsmanship already found on-site. Having the opportunity to utilize professional trail builders and drystone craftsmen will create a trail network and experience unlike anything in Ontario.

PROPOSED PRIORITIES ARE:

- NATURE TRAIL REBUILD
- NATURE TRAIL - NEW ENTRANCE BUILD
- STONE PITCH LOOP TRAIL
- ELEVATED BOARDWALK

The existing nature trail should be rebuilt to increase the experience, safety and sustainability of the tread. The existing structures show the most degradation and are currently the largest threat to visitor safety. It is recommended to change the entrance which follows more of the terrain and topography by creating a sustainable curvilinear trail. This will also allow the existing entrance to be redeveloped into a sitting area if desired.

This concept loop is to provide an accessible trail and experience to complement the magnificent Amphitheatre. Approximately 150 metres of new trail will be needed which will meander down the embankment from the entrance of the Amphitheatre behind the church steeple. The purpose of the elevated boardwalk is to connect the existing trails in the flood plain and along the Saugeen River together. This will create a cohesive trail network with a series of stacked loops that would begin and end at the Amphitheatre.



COMMUNITY HEALTH & WELLNESS TRAILS

The need for two separate trail networks was identified at the plenary session in October of 2021. There was a lot of positive reception towards creating a cohesive trail network to connect some community-based services. The current development proposal for this section consists of nine different trails. The stacked loops range in difficulty from the easiest rating of Type 1 Accessible to a more difficult Type 3. Three of the nine trails are high priority and shovel ready. Two are quickly possible based on community interest, and the remainder a more conceptual for future development.

PROPOSED PRIORITIES ARE:

- HEALTH CENTRE/ELDERS FACILITY WELLNESS ACCESSIBLE TRAIL
- RECREATION CENTRE ACCESSIBLE TRAIL

The concept behind this loop is to provide an accessible trail experience for the Wellness Centre and Elders Residence. A spur trail will meander along the property boundary of a vacant lot which will eventually become a Spiritual Ceremony Centre. The loop will begin after crossing a 7-metre bridge to access the desired property. A 4 ft width on the bridge is recommended to mitigate any motorized use. Utmost care should be given to creating the most accessible experience that is possible and feasible while respecting the natural environment through sustainable trail practices.

Furthermore, the concept loop is to provide an accessible trail which will add to the amenities available at the Recreation Centre. If built properly, it should cater to all ages and help connect the recreation building, ball diamonds, Pow-Wow grounds, and proposed pump track refurbishment



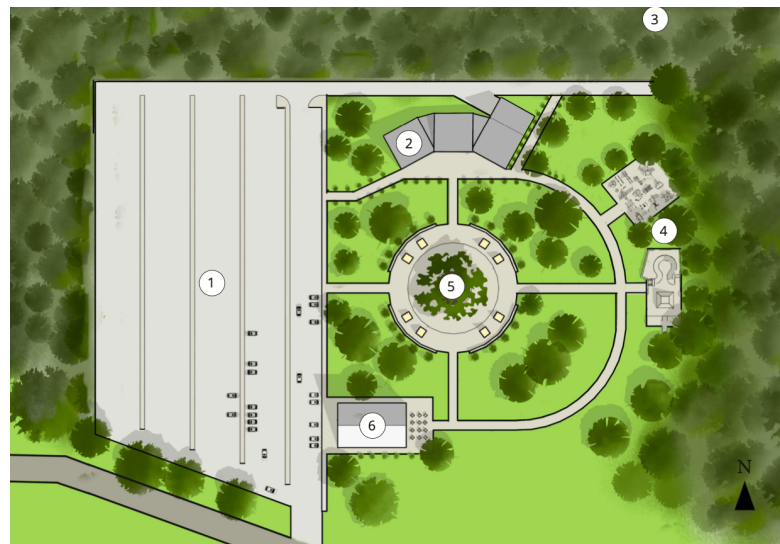
FUTURE TRAIL PHASES

County Road 13 between Sauble Beach and Southampton is a desirable route for residents, cottagers, travelers, and tourists. The road does have a paved shoulder but it is becoming increasingly dangerous for non-motorized users. Saugeen First Nation has indicated an interest in developing an alternate trail or pathway along County Road 13. Further, as the community continues to implement the 2019 Sauble Park Beach Operational Strategy, the need to explore safe pedestrian routes and access to Sauble beach from the proposed Charles Street Economic Hub will be required to address the increase in pedestrian volume. The purpose of this report is to provide some guidance notes and best practices. This will help create a more focused approach for the consulting, design and route exploration.

PROPOSED RECOMMENDATION IS:

- **COUNTY ROAD 13 ACTIVE TRANSPORTATION CORRIDOR ASSESSMENT PLAN, INCLUSIVE OF SAUBLE PARK OPERATIONAL STRATEGY**

The recommendation for a detailed County Road 13 Active Transportation Corridor Assessment Plan, inclusive of the Sauble Park Plan, be completed to determine how best to connect people to attractions, providing rest stops and informational signage, providing safe alternative transportation options and capitalize on the millions of visitors that Sauble Beach attracts annually. The Trail Corridor Development Strategy will be completed with input from regional stakeholders to provide a safer alternative for trail users and cyclists travelling along County Road #13. The plan will address the connection and flow of people accessing popular natural attractions by other means than County Road #13 improving tourist, visitor and resident safety.



SAUGEEN FIRST NATION #29

Community Trail Development Plan

Final Draft Report

As an overview, The following is the list of recommendations for implementation of the trail Development Plan. There are many moving parts with trail development but many can be actioned simultaneously. Securing funds for the different elements will be the biggest influencer of the project schedule. Luckily, there is quite a few different funding portfolios available which are applicable to all the aspects of this plan.

Trail Segment Priority List

Amphitheatre Trail

- Nature Trail Rebuild
- Nature Trail - New Entrance Build
- Stone Pitch Loop Trail
- Elevated Boardwalk

Community Health & Wellness Trails

- Health Centre/Elders Facility Wellness Accessible Trail
- Recreation Centre Accessible Trail

Future Trail Phases

- County Road 13 Active Transportation Corridor Assessment Plan, inclusive of Sauble Park Beach Operational Strategy

PROPOSED NEXT STEP:

1. Report to the Band Administrator, providing a project update
2. Provide final plan draft to Chief & Council for feedback
3. Provide an update to the Community as well as a means of gathering proposed trail plan feedback
4. Provide a copy of the full report on the Saugeen First Nation #29 website and Economic Development Department website for viewing

GATHERING FEEDBACK:

An Administrative Microsoft Forms link has been created by the Department as a way for community to provide feedback on this plan. The direct link to this form is:

<https://forms.office.com/r/vipbH2T87R>

